



Wuxi Jangli Machinery Co.,LTD

--25+Years Focus On Softgel ONLY

JL-50 Desktop Softgel Production Line

Brochure



Introduction

JL-50 Soft gelatin machine is mainly used for new product development. It can be used for softgel craft study and new product trial-manufacture in food, health-care products, traditional Chinese medicine or chemical industries; It is also used for teaching and learning the operation technology in colleges and university. It is perfect equipment for research and development of new softgel products, both animal gelatin and vegetable shell.

Specification

Die Roller Size:	Ø64x65mm (4'')
Rotating Speed:	0~5RPM(frequency control)
Single Plunger Filling Volume:	0~1.5ml
Plunger Quantity:	4 pieces (2 on each side)
Filling Volume Accuracy:	+/- 2%
Power Consumption:	0.55kw
Dimension:	920X660X1350mm
Weight:	~270kgs

Structure



- | | | | |
|---|---|---|------------------|
| 1 | PLC Touch Screen | 7 | Capsule Stripper |
| 2 | Medicine Filling Pump | 8 | Mangle Roller |
| 3 | Die Roller Housing | | |
| 4 | Gelatin Spreader Boxes | | |
| 5 | Casting Drums | | |
| 6 | Gelatin Ribbon Lubricating and Driving System | | |

Touch Screen Panel

All production and process parameters can be manipulated using a touch screen panel. This central command unit is controlled by PLC, and exhibits colored graphics, as well as rapid response on demand. This touch screen panel is complemented by highly visible Start, Stop, and Set buttons that enhance usability.

Medicine Filling Pump

The medicine filling pump is gear-driven system, and the filling volume can be adjusted by filling volume adjust knob manually. The filling volume of each plunger is 0~1.5ml and 0~3ml is also optional, and the filling volume accuracy can be controlled within 2%; Die roller alignment and injection timing adjusted manually.

Die Roll Housing

A pair of die roll shafts are driven by the main geared motor; And since the die roller is small and short, the die roller pressure system is manually style. The die rollers are easy to assemble and disassemble.

Gelatin Spreader Boxes

Full cooper construction for good thermal conductivity. Manually mechanical gelatin level control. And manually gelatin ribbon thickness adjustment by adjusting the knob on spreader boxes.

Casting Drums

Mini casting drums are incorporated inside the machine and filled with antifreezing solution. "In-line" construction guarantees straight gelatin ribbon transmission to the oil rollers. The casting drums are chilled by air conditioner installed with the machine. The speed can be adjusted on the touch screen.

Gelatin Ribbon Lubricating and Driving System

The oil rollers are made of porous PTFE material and lubricating oil can ooze uniformly. The quantity of lubricating oil can be adjusted manually by adjusting the knob.





Capsule Stripper

Easy attachable softgel capsule strippers. Nylon brushes style.

Mangle Roller

The rolling speed can be adjusted on touch screen according to the gelatin ribbon tension.

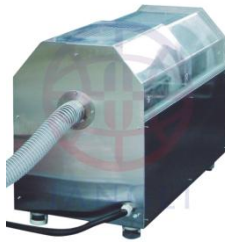
Output List

Capsule		Cavity Number	Output/hour (4rpm)2
Shape	Size		
Oval 	6#	100	24,000
	8#	95	22,800
	10#	72	17,280
	14#	64	15,360
	16#	64	15,360
Oblong 	8#	66	15,840
	10#	60	14,400
	16#	57	13,680
	20#	34	8,160
Tube 	20#	34	4,800
Other Shapes Available 			

Electrical configuration

1. PLC and touch screen: SIEMENS
2. Lower voltage apparatus: Schneider
3. Cable Conduct: Murrplastik
4. Terminal block: Weidemuller
5. Temperature Sensor: ABB

Auxiliary Equipment



Initial Tumble Dryer

Small basket used for softgel shaping and initial drying

Model: JLGZ-A



Portable Gelatin Melting and Service Tank

With wheels and integrated vacuum system, used for gelatin melting and supplying gelatin to encapsulation machine

Model: JLRJ-200



Medicine Mixing and Service Tank

With mixer and insulation layer, used for mixing and store medicine

Model: JLSY-100



Softgel Drying Trays and Trolleys

PP material and stackable drying trays, used for softgel final drying. Every 30 trays stack on one trolley

JANGLI