



**Wuxi Jangli Machinery Co.,LTD**

--25+Years Focus On Softgel ONLY

# JL-100II Softgel Production Line

Brochure



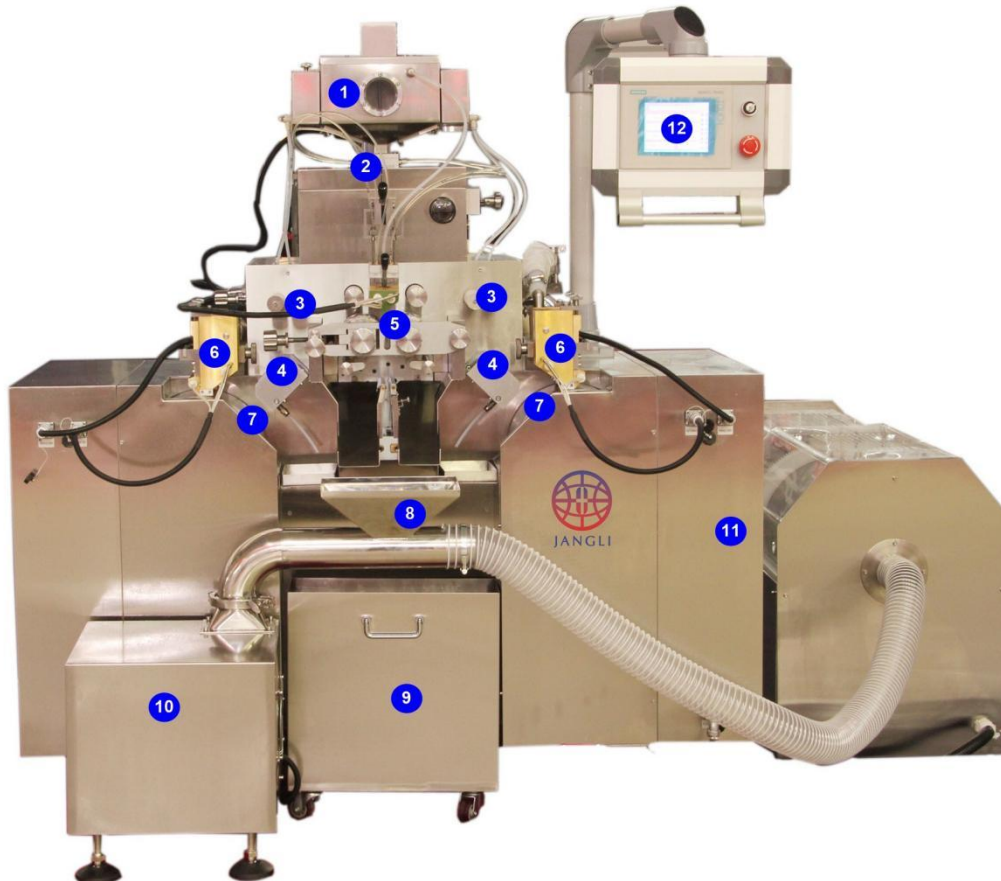
## Introduction

- JL-100II soft gelatin machine is elaborately designed on the base of old vertical style JL-100 soft gelatin machine and according to the requirements of GMP standard. It is a simple and efficient laboratory machine mainly for R&D or small batch production of gelatin capsule products in laboratories or pharmaceutical researching institutes.
- This machine is suitable for RND, Laboratories, pharmaceutical industry, nutraceutical industry cannabis, cosmetic, CBD oil and other facilities.
- This soft gelatin machine can be used for both animal and plant based vegetable gelatin softgel production, like tapioca starch or carrageenan base raw material.

## Specification

Die Roller Size:	ø80x100mm (4")
Rotating Speed:	0~5RPM(frequency control)
Single Plunger Filling Volume:	0~1.5ml
Plunger Quantity:	6 pieces (3 on each side)
Filling Volume Accuracy:	+/- 0.5%
Power Consumption:	5kw
Dimension:	1440X660X1350(h)mm
Weight:	400kgs

## Structure



- |   |                         |    |                           |
|---|-------------------------|----|---------------------------|
| 1 | Medicine Hopper:        | 7  | Casting Drum              |
| 2 | Medicine Filling Pump:  | 8  | Capsule Collecting Hopper |
| 3 | Lubrication Oil Rollers | 9  | Meshy Gelatin Bucket      |
| 4 | Oil Rollers             | 10 | Capsule Blower            |
| 5 | Die Roller Set          | 11 | Electric Cabinet          |
| 6 | Gelatin Spreader Boxes  | 12 | PLC Touch Screen          |

## **1 Control Panel**

All the functions of the JL-100II Softgel Making Machine are controlled using a PLC touch screen control panel. You can configure, and monitor the soft capsule encapsulate machine using this interactive controller. It presents information in full color, and is complemented by some Start, Stop and Set buttons.

## **Medicine Pump System**

This compact machine is equipped with 3 plungers on each side of the medicine pump (total 6 plungers). Each plunger, and its accompanying sliding valve, exhibits high precision performance. As a result, each capsule has an accurate packing volume.

## **2 Die Roll Housing**

A pair of die roll shafts are driven by the main geared motor; And since the die roller is small and short, the die roller pressure system is manually style. The die rollers are easy to assemble and disassemble.

## **3 Gelatin Spreader Boxes**

For maximum heat conductivity, the spreader box is made of copper. A set of liquid level sensors are installed at the top of the spreader box. These sensors work alongside pinch valves. They operate in tandem to automatically deliver gelatin liquid into the spreader box.

## **4 Casting Drums**

This machine's casting drum is made of SS316 material, and has a very smooth surface. It is also kept constantly cool using some anti-freeze liquid. The liquid's temperature is further kept cool using an external air conditioner. For maximum cooling effect, a cooling fan is installed under the casting drum. The speed can be adjusted on the touch screen.

## **5 Gelatin Ribbon Lubricating and Driving System**

The micro-lubricating oil roller has an innovative design. It is made of TT material, and has a collection of numerous holes. During operation, the oil flows right out of the holes smoothly. In addition to that, there are some regulating valves that control the emerging oil's volume. Together, these design features ensure a thin micro film of oil on the softgel capsules, that does not require drying or cleaning after production.

## **6 Capsule Stripper**

Easy attachable softgel capsule strippers. Nylon brushes style.





## **7 Mangle Roller**

The rolling speed can be adjusted on touch screen according to the gelatin ribbon tension.

## **8 Capsule Conveyor(optional)**

The JL-100II Softgel Making Machine is equipped with a stainless steel chute, that delivers softgel capsules into the dryer. (However, you can specify that your machine be equipped with a conveyor belt instead, for more effective delivery).

**Output List**

Capsule		Cavity Number	Output/hour (4rpm)2
Shape	Size		
<b>Oval</b> 	<b>6#</b>	100	24,000
	<b>8#</b>	95	22,800
	<b>10#</b>	72	17,280
	<b>14#</b>	64	15,360
	<b>16#</b>	64	15,360
<b>Oblong</b> 	<b>8#</b>	66	15,840
	<b>10#</b>	60	14,400
	<b>16#</b>	57	13,680
	<b>20#</b>	34	8,160
<b>Round</b> 	<b>38#</b>	60	9,120
<b>Tube</b> 	<b>20#</b>	34	4,800

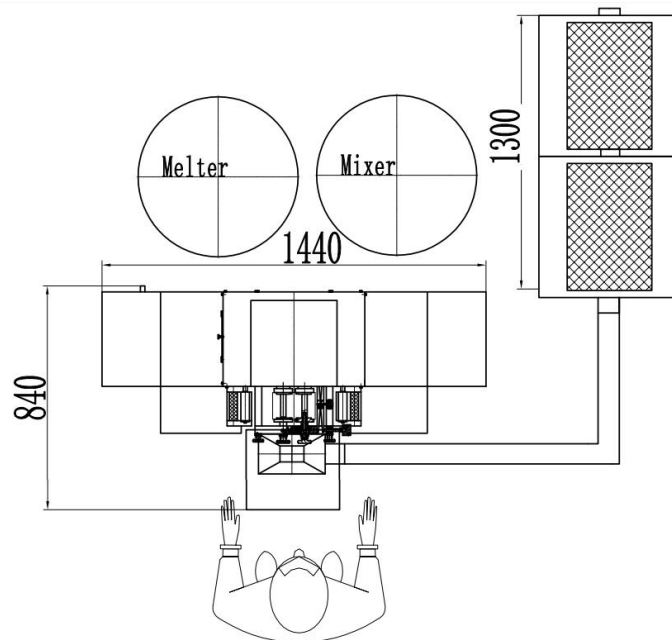
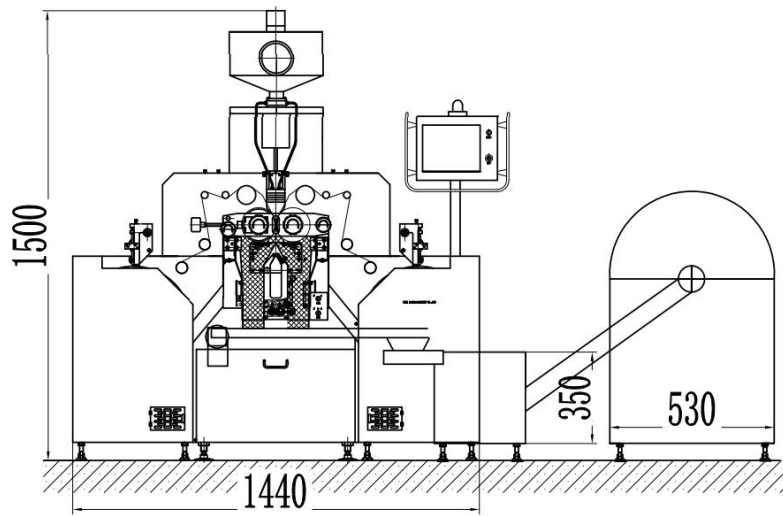
**Other Shapes Available**



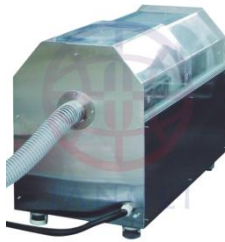
**Electrical configuration**

1. PLC and touch screen: SIEMENS
2. Lower voltage apparatus: Schneider
3. Cable Conduct: Murrplastik
4. Terminal block: Weidemuller
5. Temperature Sensor: ABB

## Standard Layout



## Auxiliary Equipment



### Initial Tumble Dryer

Small basket used for softgel shaping and initial drying

Model: JLGZ-A



### Portable Gelatin Melting and Service Tank

With wheels and integrated vacuum system, used for gelatin melting and supplying gelatin to encapsulation machine

Model: JLRJ-200



### Medicine Mixing and Service Tank

With mixer and insulation layer, used for mixing and store medicine

Model: JLSY-100



### Softgel Drying Trays and Trolleys

PP material and stackable drying trays, used for softgel final drying. Every 30 trays stack on one trolley